



The Informer

Newsletter of the Greater Omaha Orchid Society

PO Box 241871 Omaha, NE 68124 greateromahaorchidsociety.org March 2013

OFFICERS

President:
Roberta Ginavan
(712) 487-3085
Vice President:
Eric Stoiber
(402) 206-4554
Secretary:
Jim Pyrzynski
(402) 734-4112
Treasurer:
Sandy Rome
(402) 714-1284
Board Members:
Jacque Lewzader
402-573-2217
Linda Schroeder
(402) 990-5501
Ron Fechner
(402) 618-4268
Past President:
Jack Thraen
(402) 571-7434

Newsletter Editor:
Jim Pyrzynski
Articles may be mailed to Jim at
2107 Alberta Ave., Bellevue, NE
68005 or emailed to:
jpyrzynski@cox.net
Submission deadline for the
April Informer: April 10, 2013

Omaha Orchid Society Membership Information

Annual Dues:
Single: \$15.00
Family: \$20.00
Annual dues are paid to the treasurer by January 1 of each year and are delinquent the day after the February meeting. Dues for new members joining after July 31st are one-half the annual rate.

Dues should be made payable to G. O. O. S. and may be mailed to the G. O. O. S. post office box: G. O. O. S., PO Box 241871, Omaha, NE 68124.

IN THIS ISSUE

This month's meeting
pg. 1
Member on themend
pg. 1
Membership renewal
pg. 2
Show recap
pg. 2
Thought on the show
pg. 2
AOS monthly schedule
pg. 2
Hints from First Rays
pg. 4
Library news
pg. 5
Seed sharing
pg. 5
Photographer wants orchids
pg. 5
Monthly Reports
pg. 5

CALENDAR OF EVENTS MEETINGS

NOTE THE LOCATION CHANGES FOR EACH MEETING BELOW:

March 13, 2013
Extension Office
8015 West Center Rd.
7:00 PM new growers group
7:30 PM Program: repotting session
Refreshments: Marilyn Hawes

March 27, 2013
6:45 PM Papillion Library
Board Meeting

April 10, 2013
Extension Office
8015 West Center Rd.
7:00 PM new growers group
7:30 PM Program:
uncompotting session - come to the meeting, go home with a free plant
Refreshments: Jim Pyrzynski

EVENTS

March 9 – 10, 2013
Denver Orchid Society
Spring 2013 Show, Tagawa
Gardens, 7711 S. Parker
Rd., Centennial, CO
Contact: Sue Klukan, 303-
283-7817, her79sporty@
yahoo.com

March 16 – 17, 2013
Springfield Orchid Society
Show, Springfield Greene
County Botanical Center,
2400 S. Scenic Ave.,
Springfield, MO, Contact:
Nathan Bell, 660-888-
0225, nbell@cofo.edu

March 16 – 17, 2013
38th Annual Illowa Orchid
Society Spring Show,
Wallaces Garden Center &
Greenhouse, 2605 Devils
Glen Road, Bettendorf, IA,
Contact: Cherrie Pearsall,
309-230-0342, cheken@
nbson.net

April 6 – 7, 2013
Illinois Orchid Society
Show, Chicago Botanic
Garden, Lake Cook Road,
Glencoe, IL, Contact: Rose
Matchen, 847-587-6525,
goldrosey@att.net

April 20 – 21, 2013
Ann Arbor Orchid Festival
and Mid America Orchid
Congress, Methaei
Botanical Gardens,
1800 North Dixboro
Rd., Ann Arbor, MI,
Contact: Alex Challis,
734-971-6186, alex@
newworldorchids.com

THIS MONTH'S MEETING: POTTING SESSION

The program for the March meeting (March 13) is our annual potting – and repotting – session. Spring is here and generally speaking it's a good time to repot your orchids. Orchid mix breaks down with watering and fertilizing and it turns into a compost-like substance with little air for orchid roots. Remember most of the orchids you grow are epiphytes - air plants – and they require an especially airy mix. In a natural environment they would be found growing on trees, through the moss, and humus on the tree limbs, but we generally grow them in pots and the potting mix needs to be renewed periodically.

We will have demonstrations on potting and potting mix will be available for purchase – BUT the objective is for you to get your hands dirty and get a feel for what needs to be done. Come appropriately dressed and be prepared to DIG IN.

MEMBERS ON THE MEND

We have encouraging news about a couple of our members who are in the hospital. John Dolen, who was diagnosed with Guillain-Barré syndrome,

is making progress. He has a long road ahead but he is undergoing lots of therapy. John is now at the Madonna Rehabilitation Hospital in Lincoln and if you want to send him a card, address it to: John Dolen, Madonna Rehabilitation Hospital, 5401 South Street, Lincoln, NE 68506.

Carol Behrens is also making progress from the operation which removed the pins which were inserted during the operation over a year ago. She too is undergoing therapy. Cards to Carol should be addressed to her at her home: Carol Behrens, 8521 Northridge Dr. Omaha, NE, 68112.

MEMBERSHIP RENEWAL TIME HERE AND GONE

That's right the time has passed for you to renew your membership – and there are a number of you who have not renewed. Memberships are considered delinquent (to use the by-laws term) on the day following the February meeting – which was February 14th this year – some Valentine.

If you received a membership renewal form with your issue of the newsletter, you have not renewed your membership. We certainly would appreciate it if you would take the time to renew your membership. You may either mail in the form or bring it to the next meeting. Thank you,

SHOW RECAP

Another show is history – the 26th annual one and it was an excellent show. A visitor count is not yet available but by all appearances there were plenty of people making their way through the exhibits and making purchases from the vendors. New member, Twilla Westercamp, wowed everyone with her first ever

exhibit. Twilla took home the GOOS Best Exhibit Award and the GOOS Best First Exhibit Award. Her little basket garden was complete with live fish!

The AOS Show Trophy went to the Orchid Society of Greater Kansas City for their spectacular display. This year they did a tabletop rather than their usual large floor display. Not only were the Kansas City folks displaying their orchids here in Omaha, they were also displaying them in Fayetteville, AR at the Orchid Society of the Ozarks third annual show.

Cattleya George King, grown by Norm Larson was the GOOS Challenge Award for best plant exhibited by a Society member. The President's Award for best plant went to Paphiopedilum Raingreen's Grande, exhibited by Orchid Inn USA. Dave Bird's Dendrobium polysema was the recipient of two awards, the Drs. Lorraine Leiser and Dave Taylor Award for best species and the GOOS Memorial Award for best Dendrobium (sponsored by Marilyn Hawes). The Dr. and Mrs. F. Miles Skultety Memorial Award for best Cattleya went to Rhyncholaeliocattleya Tutunkamen 'Pop' AM/AOS exhibited in the Orchid Society of Kansas City display. The Jim Pyrzyński Award for best Phragmipedium went to Phragmipedium Fritz Schomburg, exhibited by Orchid Inn USA.

There were seven AOS awards given at the show. Paphiopedilum Raingreen's Grande 'Jeanie's Twisters', exhibited by Orchid Inn USA received an AM/AOS, 83 pts. Masdevallia Fred Bergman 'OSGKC', in the OSGKC exhibit received a HCC, 78 pts. Papiopedilum (Paph. Jade Lantern X Paph. mali-poense), grown by John Dolen, received a HCC, 76 pts. Rhyncholaeliocattleya

George King 'Serendipity', grown by Norm Larson, received a CCM, 82 pts. Pleurothallis hatschbachii 'Bryon', received a CBR. Phalaenopsis gibbosa 'Helen', exhibited in the OSGKC display, received a HCC, 77 pts. Paphiopedilum Berenice var. Album 'Smart Buy', brought by Joe Lankton, received HCC, 77 pts.

THOUGHTS ON THIS AND OTHER SHOWS

The Society members' involvement setup of the show, the ribbon judging, the their assistance provided to visitors, vendors, and exhibitors, was very impressive. Everyone eagerly went about their tasks and their enthusiasm was contagious. We need to carry on the momentum we have here to our next shows, and not only shows that we host, but also to shows that other societies host.

As noted in the previous article, the Orchid Society of Greater Kansas City was represented at two orchid shows on the same weekend. And they just hosted their own show a few weeks earlier, at an event we were absent from. Yes, we had the Home & Garden Show event, but even a small display would have been better than no display at all.

Looking ahead to the rest of the year and into the next, there should be a few nearby shows we could and should support. Last year the Eastern Iowa Orchid Society held a show in October, there is no information on it this year but we should consider it if invited. OSGKC will probably have its annual show in February 2014 and we definitely need to plan to go there. And in late April/early May, the Minnesota Orchid Society will host the AOS members meeting, the spring MAOC in conjunction with their annual show – an event that is a must for our participation. So give it a thought and start planning.

AOS Monthly Checklist for March and April

Cattleya

Although March is, in many parts of the country, still a cold and blustery month, the lengthening days and warmer temperatures allowed by increased light are long-awaited harbingers of the coming change of season. Some of the best standard cattleyas of the year will be in bloom, or will be blooming soon. The last of the winter-flowering hybrids will join the earliest of the spring hybrids in a wonderful display. Be on the alert for senescing sheaths that need removal. If these yellowing sheaths are not removed, the moisture they trap can lead to bud rot. Careful removal of the sheath will allow the buds to develop, although they will need additional support. Changing light conditions can also be a problem in March and April. An exceptionally bright day, especially immediately following a rain, can lead to sunburn of the foliage if shading is not attended to properly. There can still be periods of dull days where spikes can be weakened owing to the lower light. Lengthening days will mean increased metabolic rates necessitating increased water and fertilizer. The plants will indicate needs by drying more rapidly, which means more frequent watering and fertilizing.

With the passing of the season for winter bloomers, and the beginning of the season for spring bloom, it is also the time to be on the lookout for plants that will need potting after they bloom. Immediately after blooming has proven to be the best time to repot winter- and spring-flowering cattleyas. In most cases, they will be ready to grow roots, so if potted at this time, they will root right into fresh mix with little or no setback.

Cymbidium

Plants should be putting on a spectacular show this time of

year. Adjust all staking and twist-ties and be on the lookout for aphids, slugs and snails. Give adequate water because flowering strains the plants. As new growths appear later, increase the nitrogen level in the fertilizer. Should a plant look healthy but not be blooming, try increasing the light during the next growing season. The number-one reason for no flowers is lack of light.

Dendrobium (Australian)

These hard-cane dendrobiums will be at their flowering peak now. It is not unusual to see a specimen of this type in an orchid show boasting 1,000 flowers. The secret with this group -- bred primarily from *Dendrobium kingianum* and *Dendrobium speciosum* -- is to provide ample water, fertilizer and light during the growing season.

Lycaste

This genus of superb orchids will be coming to the end of its flowering season. Soon you will see the beginning of new root growth, which is an excellent time to repot into fresh media. As new growth emerges, provide ample fertilizer and water. A sign of good culture is an increase in the size of pseudobulbs with each successive year.

Miltoniopsis

This marks the beginning of the flowering season. Amazing displays of color will dazzle the grower over the next few months. Prepare your plants for optimum display by staking spikes (if needed) and cleaning off the older yellow foliage. Do not miss the wonderful fragrance as the flowers unfold.

Paphiopedilum

March is the beginning of the season of heaviest potting for lady's-slipper orchids. However, it is a month where the volume of plants needing attention is still small. It is an excellent month to take the time to work with your paphiopedilums before the pressure of other potting prevents your doing the thorough job you should. Look at each plant: Is it clean of dead and dying foliage? Is it weed free? Does it need potting? Is it in spike? Does it have an insect problem? Cleaning and restaging your paphs is one of the most satisfying tasks of the orchid year. Cleaned and potted paphiopedilums look happy.

The summer-blooming types will be showing the first of their buds in March and April. Be on the lookout for the buds, as well as any insect pests that may have found their way into the crowns of your plants. It is especially difficult to clean mealybugs, in particular, once they have become established in the plant. Better to get to them before they get a good toehold.

Increasing light levels should give emerging spikes the strength they need to grow straight and strong. Do not be too anxious to stake the spikes, because if they are staked too soon, the flowers may develop a "nodding" stance, where the dorsal will not stand upright. If the spikes seem to develop at an angle, let them, and stake after the flower has hardened for best carriage, especially on the hybrids with fairieanum background.

Phalaenopsis

In most of the country, March is the peak blooming month for phalaenopsis. Staking needs to be carefully attended to, so that the flowers will be displayed at their best for orchid shows and judging -- even those intended for your home will look best if properly staked. One of the most decorative aspects of phalaenopsis spikes is the way they gracefully arch. If not staked properly, the spike will lack this grace and will not be as pleasing. Most growers like to have the final support just below the first flower, allowing maximum support, without sacrificing the beauty of the arching spike.

Rapid-growing spikes and open flowers place extra demands on the plant. Careful monitoring of watering and feeding will give the plants the energy they require to give their best floral display. Remember, too, that the lengthening days will also increase the frequency at which plants need water.

Beware of the invasion of sucking pests that accompany the flowering season. Flowers and spikes are favorite targets of mealybugs and scales. Be on the look out for their presence, often indicated by the appearance of sooty mold resulting from the exudate of the bugs, and treat before flowers or buds are too advanced. If flowers and buds are too far along, the chemical treatment may damage or abort them.

Pleurothallids

Members in this large and increasingly popular group will be looking their best now. If plants are not in flower, the next few months provide an excellent time to divide if needed or repot into fresh mix. Taking care of these tasks now will allow enough time for your plants to become established before the hot weather arrives.

The AOS thanks Ned Nash and James Rose for this essay.

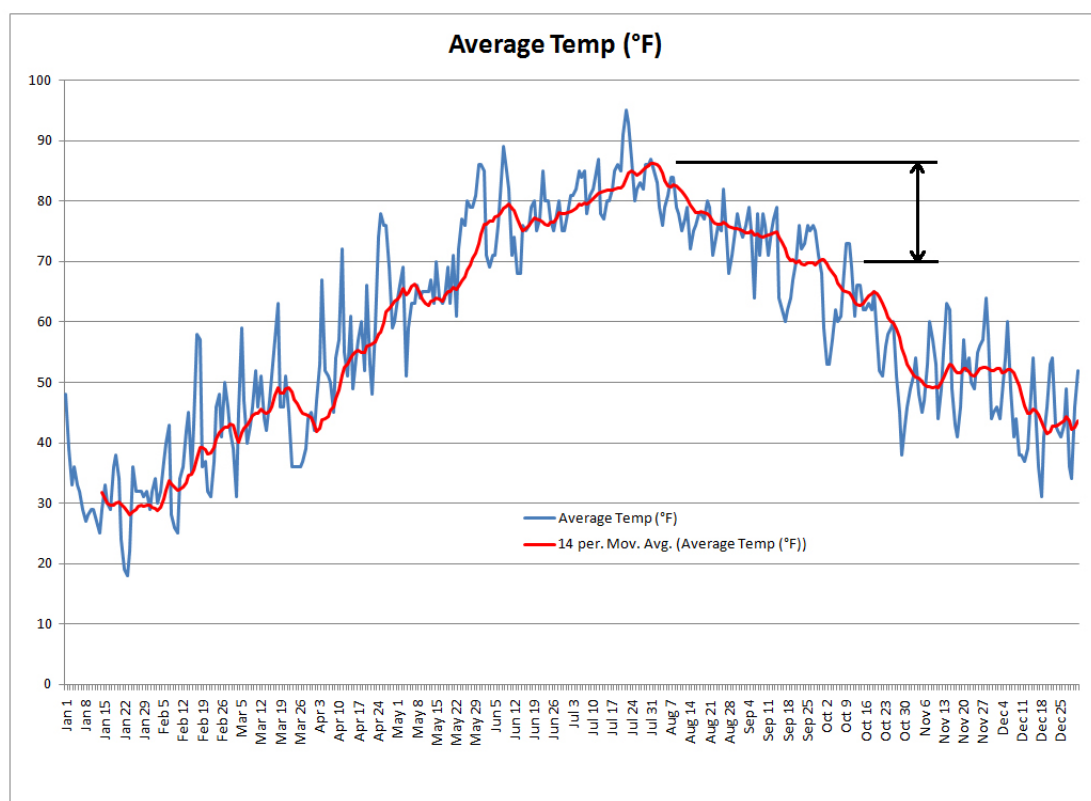
From First Rays “Chilling” a Phalaenopsis

This is a subject that comes up so often, I'd like to address it, and that is the need for a “cool period” for Phalaenopsis to initiate new inflorescences.

First, we need to understand that not all species require it. Interestingly enough, those with white/pink/purple flowers generally do, while those with yellow/orange/red flowers mostly do not. Of course, considering the complex breeding in modern hybrids, that distinction is pretty much “blurred”.

Most of us, as beginners, were led to understand that Phalaenopsis “need to have a 10 to 15° day/night drop” in order to initiate spiking. Dr. Yin-Tung Wang, while at Texas A&M University, did some research into this area in order to optimize the growing and blooming of these plants, and determined that the day/night differential was not the key, but that an overall average decrease in temperature of the growing conditions led to spiking. More specifically, the plants were shown to require about 10 days to two weeks at an average growing temperature of 10°-15° lower than the temperature at which they had been normally growing. In other words, grown at a constant 85°, one could lower the growing area to a constant 70° and initiate spiking, without any day/night variation whatsoever.

Similarly, it can be shown that even with significant day/night temperature variation, spiking will not occur until the average is shifted downward. To test this I used a data recorder to track the daily high and low temperature in my own area. The graph below shows the average daily temperature during 2011.



The blue line represents the average temperature for each date. The red line (the less jagged line) is a 14 day running average temperature, which is the more important of the two curves. Note that we hit a peak in late-July/early-August of roughly 85°. You'll also note that in early October, we finally got to an average temperature 15° lower. If Dr. Wang's explanation of average temperatures was valid, we would expect that our Phalaenopsis plants would start spiking approximately 6 to 8 weeks later, and in fact, that is exactly what happened, and now with us approaching at timeframe 6 to 8 weeks later than that, we are just beginning to see the flower bud's reach full development and begin to open.

Before anyone gets concerned about the low averages early and late in the year, let me explain that I control only the minimum temperature with a thermostat, and that's set to 60°, so the greenhouse temperature typically will match the outside temperature during the middle of the year when these various control points were reached.

It is also interesting to note (I won't bore you with the actual data) that of the 365 measured days, 222 of them actually sustained day/night temperature variations of 15° or more, and they occurred in every month of the year. Never however, did we experience 10 days to two weeks of such daily variation, further supporting that is the average temperatures that are important, and not the day-to-night variation.

One last comment on this before I go: Dr. Wang also pointed out that once spike initiation has occurred, the plants will grow their flower spikes best and flower the best if the average temperature is raised back to the elevated level and not kept at a low level.

LIBRARY NEWS

Busy? For sure, but looking ahead, consider this: All the library books, listed on the GOOS website, will be available for checkout in March.

Did you get a gift orchid? Has the winter being unkind to your plants? Are you facing repotting? Looking to introduce a new 'breed' to you collection this spring? What is that crawling/spotting/gnawing on your prize plant? Building a greenhouse? Many of the titles on the GOOS list are for beginners..great pix, clear directions, etc. Others cover very specific types or situations.

In your quiet moments, check the list and note the titles that you want to investigate. Let Ron know (ronfechner@yahoo.com 402 618 4268) and he can be sure the titles you want to see come to the March meeting where you can look at them in detail and/or check them out. Then you'll be ready for our repotting meeting, placing an order with a vendor or introducing that newcomer to your collection. Or maybe just looking at pix while you look for signs of spring. See you in Wednesday...

A New Seed Source in Omaha: Seed Sharing – Library Style

The Benson Branch of the Omaha Public Library is home to the pilot program “Common Soil Seed Library.” Any library member can check out open pollinated garden seeds. Ideally, gardeners will save seeds from their bounty and return some to the library. Borrowers will not be hit with a late “seed” fee if they fail to return seeds.

According to the Omaha Public Library, “Common Soil strives to provide a space were local gardeners, farmers and library customers can share open-pollinated seeds, as well as develop awareness and gain information about gardening and seed saving.” The Benson branch will also hold some spring workshops on saving seeds.

These workshops include: Seed Saving 101, Seed Germination 101, Planning Your Garden for Seed Saving, and Early Season Seed Saving. For more information on the seed library and classes, call the library at 402-444-4846.

LOCAL PHOTOGRAPHER NEEDS ORCHIDS TO PHOTOGRAPH

(Note: The following article is posted without any endorsement by the Society Board. Members should exercise appropriate cautions.

My name is Buck Christensen, and I'm a floral/fine-art photographer in Council Bluffs. I'm looking to establish a symbiotic relationship with one of your local orchidist members. Basically, I would like to find a local orchidist who would let me photograph their orchids in exchange for the digital images I capture, which they could then use for their own promotional purposes. I would like full artistic license and would photograph the orchids without damaging them in any way.

I do not know any orchidists personally, which is why I figured contacting your society through this email address would be a good starting point, in case you know someone who would be receptive to such an arrangement. Examples of my floral photographs can be found at <http://www.buckstopphoto.com/bloom>.

Thanks for your time. Please let me know.

Sincerely,
Buck Christensen

MONTHLY REPORTS

Greater Omaha Orchid Society General Meeting
February 13, 2013

The meeting was called to order at the Douglas/Sarpy County Extension Office at 7:30 pm.

President Roberta Ginavan welcomed visitors and members to the meeting.

Minutes. The minutes for the January 2012 meeting were approved.

Treasurer's Report. Sandy Rome reviewed the expenses for the past month. Report was filed for audit.

Member reports. Dave Taylor gave a report on the status of John Dolen (who had been diagnosed with Guillain-Barre syndrome). He is at the Madonna Rehabilitation Hospital in Lincoln and will be undergoing therapy for an extended period of time.

Dick Behrens gave a report on the status of Carol Behrens, his wife (she had recently undergone an operation for removal of pins which were inserted when she broke her hip over a year ago).

Lauritzen Gardens Spring into Spring. Roberta discussed the Society's possible involvement in the spring fundraiser at the Gardens, May 17 – 19 and asked for the vote of the membership for a vote. A motion was made and approved.

IRS status. Roberta reiterated that the Society was now a 501(c)(3) organization and that donations were tax deductible

Home and Garden Show. A brief summary of the results of the show was given. All 12 of the mini-Phalaenopsis were sold but only 2 of the 6 Oncidium intergenerics were sold. A few other items were sold during the course of the show. There was a modest profit. Four of the excess plants were sold and one was donated to the raffle table. One concern discussed by Roberta was that the Home and Garden Show involvement impacted on our ability to participate in the Orchid Society of Greater Kansas City show the same weekend. OSGKC supports our show every year with a display and it is important that we reciprocate if we expect their support of our show to continue.

Annual Orchid Show. Jim discussed the annual show and recirculated the signup sheets. Jacque Lewzader discussed the needs for the hospitality room.

Program. The program was a review by Jim Pyrzynski of how to register plants for Mid-America ribbon judging, using plants brought in for show and tell.

Refreshments were provided by Roberta Ginavan.

Raffle plants were provided by Norm Larson.

Meeting adjourned.

Respectfully submitted,
Jim Pyrzynski, Secretary

Greater Omaha Orchid Society Board Meeting
February 27, 2013

The Greater Omaha Orchid Society Board met at the Papillion Public Library at 6:45 PM. In attendance were: Roberta Ginavan, Eric Stoiber, Sandy Rome, Ron Fechner, Linda Schroeder and Jim Pyrzynski.

Extension Office Room Reservations and programs. Section B is reserved for the March meeting. There is no space available for a meeting on June 12 at the Extension Office. Options are to change dates or location.

The program for the June meeting is still up in the air. Carlos Fighetti has not communicated any further on his requirements. Roberta will follow up on this. The program for the May meeting also needs to be reworked. UNO professor Dr. Weber will not be available. Eric discussed possibly moving the date to a weekend (May 4 or 5) and having Bryon Rinke come to speak and sell plants – he can only come on a weekend. Eric will discuss it further with Bryon who will be here during the March show.

Home and Garden Show and other shows. Any problems encountered during the show were not significant. The net income was \$190.16 (not including the cost of the parking passes).

Another possible venue for exposure of the Society is the Cathedral Flower Show which takes place in late January/early February.

Other Society shows – Eric suggested that possibly members could be reimbursed for gas expenses for travel to another society show. There was agreement that we need to increase membership involvement in these activities.

Annual Orchid Show. The annual show was only a few days away. Jim will develop a poster with the programs for the upcoming meetings. Ron Fechner will get an easel on which to place the poster near the exit.

Insurance. The annual insurance premium is due in June, the policy is with Hartford, NP Dodge Insurance Company is the agency. There was some confusion about what was covered by the policy. A copy of the policy will be brought to the next board meeting so that matters can be clarified.

Benson Plant Rescue. The group originally made contact with GOOS a few years ago – they “rescue” discarded house plants. Jim raised the issue of who will be responsible for caring for the rescued plants – he still has plants in recovery from the 2012 Home and Garden Show and does not have any more room. Further discussion is needed.

IRS matters. A copy of the compliance guide for 501(c)(3) organizations has been received. The publication number IRS Pub 4221-PC (07-2009), Cat # 49829R.

Meeting adjourned.

Respectfully submitted,
Jim Pyrzynski, Secretary

